

# Brush Coat



## Brush Coat data sheet

### About this product

**Brush Coat** is a cement-based, coloured, waterproof, textured finish for interior and exterior walls. Applied by block-brush.

Produced from carefully selected raw materials for consistency of product, it only requires the addition of water on site.

### Technical services

Weber has a team of experienced advisors available to provide technical support. Technical helpline : 0860 27 28 29 or visit [www.weber-tylon.co.za](http://www.weber-tylon.co.za)

### Use

Provides a durable, coloured, waterproof coating for brick- or block-work in one coat.

### Suitable surfaces

Flush brick-work or block-work and scratched cement plaster.  
Not suitable for previously painted surfaces.

### Packaging and coverage

Brush Coat is supplied in 20kg paper bags.  
Coverage is approximately 7 to 10m<sup>2</sup> per bag.

### Storage and shelf life

When stored, unopened in a dry place at temperatures above 5°C, shelf life is 12 months from date of manufacture.

### Good practice

Do not apply :

- if frost is forecast within 24 hours of use
- in damp/wet conditions
- in temperatures below 5°C or above 30°C
- on elevations in direct sunlight or where the substrate is hot

To ensure colour consistency, the material required to complete the job should be of the same batch number.

### Surface preparation

The surface onto which Brush Coat will be applied :

- must be cured for a minimum of 28 days
- must be sound, clean and free of any material which may impair adhesion
- must be true in plane, hard and slightly rough to form a mechanical key

### Masking

Mask all areas where there is a risk of splashing and staining and where straight edges are required. Masking tape must be removed before the material has dried.

### Features and benefits

- Waterproof
- Integrally coloured for low maintenance
- Single coat application
- Available in a range of colours
- Quality assured raw materials
- Exceptional and consistent quality
- Backed by superior technical support

### Safety instructions

Contains cement, which is alkaline when wet and can cause skin irritation. Use eye protection and gloves and avoid prolonged skin contact. Avoid inhalation of dust. Wash skin contamination away with warm soapy water. Remove splashes to the eyes by prolonged irrigation and consult a doctor. Do not ingest.

### Application

#### Filling holes and indentations

Mix 4 volumes of Brush Coat and 1 volume of water to a paste. Use this mix to fill any holes or indentations in the surface. Scrape flush with the surface and leave to dry overnight.

#### Mixing

- Combine 3 volumes of Brush Coat with 1 volume of water.
- Stir thoroughly.
- A small amount of water may be added if necessary.

#### Application method

The surface should be dry when application starts.

- ▲ Wet the brush and shake off excess water.
- ▲ Dip the brush in the mixture and brush the wall liberally. Make sure to fill small holes and indentations.
- ▲ Coat the entire wall in one operation to avoid dry joints. Do not stop and start. Do not patch.
- ▲ Leave overnight to air cure.

Note : A second coat may be applied if required and should be cured in the same way.

#### Curing

Wet the coated walls 3 times during the next day using clean water.



apricot



cocoa



cream



grey



light brown



yellow

These colour representations are as accurate as the printing process permits. It is advisable to view an actual product sample before a final choice is made.

### Saint-Gobain Weber South Africa (Pty) Ltd

77 Ostend Road, Germiston South, Johannesburg

Tel.: +27 11 345-5300 Fax: +27 11 345-5301

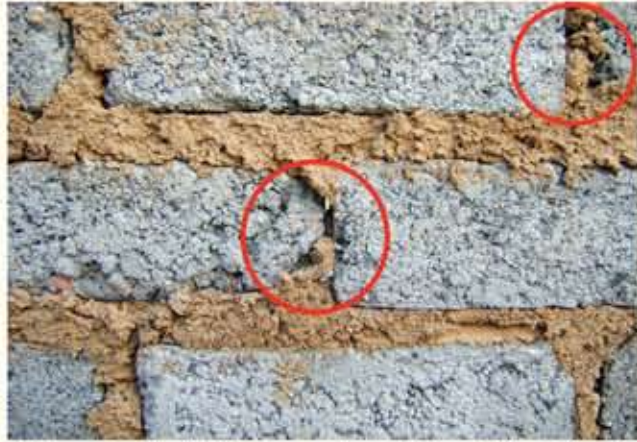
Sales : 0860 27 28 29 or visit [www.weber-tylon.co.za](http://www.weber-tylon.co.za)



To the best of our knowledge and belief, this information is true and accurate. As the conditions of use and any labour involved are beyond our control, the end-user must satisfy himself by prior testing that the product is suitable for his specific application. Products are sold subject to our Standard Conditions of Sale.

more than a century of innovation

## Surface preparation



It is important to fill all holes and indentations in the brickwork and mortar lines before application commences



Mix 4 volumes of Brush Coat and 1 volume of water to a paste



Use this paste to fill the holes and indentations in the brickwork and mortar lines  
Scrape flush with the surface and leave to dry overnight



If the brick-work is flush jointed or the mortar has been pointed, it is not necessary to perform the previous step

## Mixing



Combine 1 bag of Brush Coat and 5 litres of clean water  
Stir thoroughly



The mixture should have a smooth, creamy consistency  
A small amount of water may be added if necessary



Wet the brush and shake off excess water

## Application



Dip the brush in the mixture and brush the wall liberally



Make sure to fill small holes and indentations



Coat the entire wall in one operation to avoid dry joints  
Do not stop and start. Do not patch



Clean all windows, surrounds, etc.

## Curing



Leave overnight to air-cure



Wet the coated walls 3 times during the next day using clean water



Before coating



After coating